

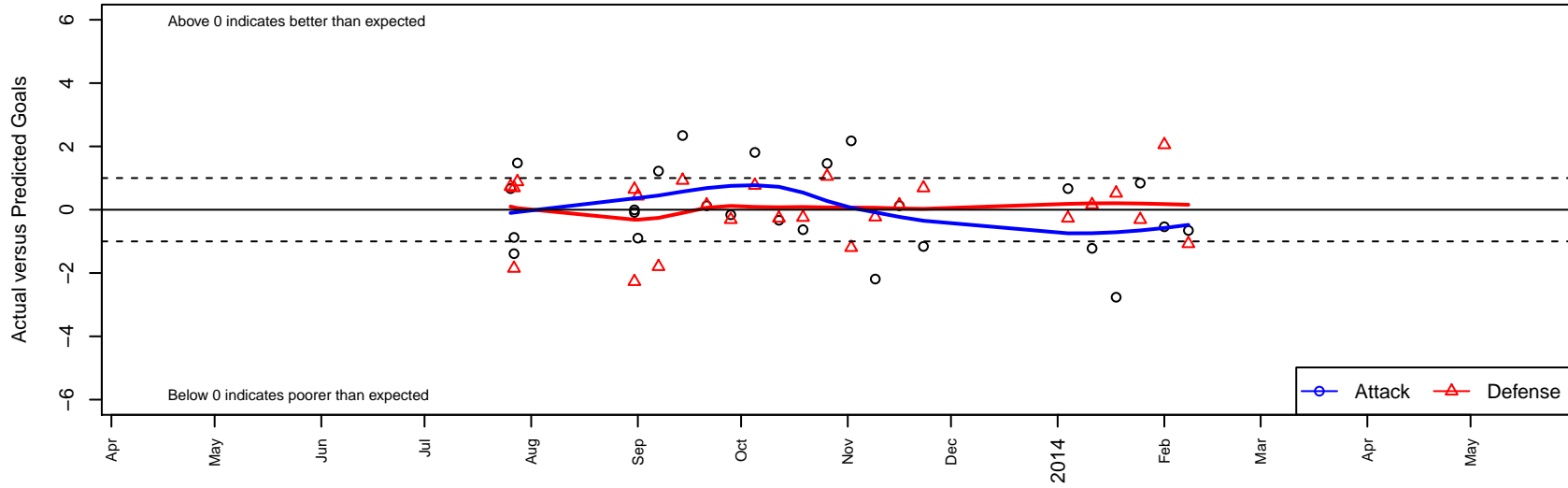
Seattle United S Blue B01

Seattle United Regional
 Seattle, WA
 B01 total strength=854
 attack=1.33 defense=1.09
 fall league = NPSL B12D1
 alt names used:
 Seattle United South B01 Blue
 Seattle United S B01 Blue
 2013 Seattle United South B01 Blue

Venues played:
 Crossfire Select Cup BU12 Gold
 Labor Day Cup BU12
 NPSL B12D1
 Founders Cup B01



Seattle United S Blue B01
 Dots are actual minus expected GF (blue circles) and GA (red triangles).
 Blue line is smoothed change in attack strength. Red is smoothed change in defense strength.



| | date | home | | away | | venue | pred.home | pred.away |
|-------|-------------|-------------------------------|---|-------------------------------|---|--------------------------------|------------------|------------------|
| 22272 | 2014-02-08 | Seattle United S Blue B01 | 1 | Seattle United W Blue B01 | 2 | Founders Cup B01 | 1.66 | 0.93 |
| 21992 | 2014-02-01 | Seattle United S Blue B01 | 1 | Seattle United S Black B01 | 0 | Founders Cup B01 | 1.54 | 2.05 |
| 21708 | 2014-01-25 | Seattle United S Blue B01 | 3 | BYSC Select Venom B01 | 1 | Founders Cup B01 | 2.16 | 0.69 |
| 21313 | 2014-01-18 | Seattle United S Blue B01 | 4 | Mercer Island FC Cascade B01 | 0 | Founders Cup B01 | 6.76 | 0.52 |
| 21103 | 2014-01-11 | ISC Arsenal Red B01 | 0 | Seattle United S Blue B01 | 6 | Founders Cup B01 | 0.16 | 7.22 |
| 20902 | 2014-01-04 | Seattle United S Blue B01 | 3 | Crossfire Select Taylor B01 | 1 | Founders Cup B01 | 2.33 | 0.73 |
| 19080 | 2013-11-23 | Seattle United S Blue B01 | 1 | BYSC Select Venom B01 | 0 | NPSL B12D1 | 2.16 | 0.69 |
| 18416 | 2013-11-16 | FC Edmonds Riptide B01 | 1 | Seattle United S Blue B01 | 1 | NPSL B12D1 | 1.15 | 0.87 |
| 17674 | 2013-11-09 | Crossfire Select Nakamura B01 | 1 | Seattle United S Blue B01 | 1 | NPSL B12D1 | 0.77 | 3.19 |
| 16678 | 2013-11-02 | Seattle United S Blue B01 | 4 | BIFC Blue B01 | 2 | NPSL B12D1 | 1.82 | 0.80 |
| 15787 | 2013-10-26 | Seattle United S Black B01 | 1 | Seattle United S Blue B01 | 3 | NPSL B12D1 | 2.05 | 1.54 |
| 14869 | 2013-10-19 | Mercer Island FC Heat B01 | 1 | Seattle United S Blue B01 | 2 | NPSL B12D1 | 0.76 | 2.63 |
| 13807 | 2013-10-12 | Seattle United S Blue B01 | 2 | Crossfire Select Taylor B01 | 1 | NPSL B12D1 | 2.33 | 0.73 |
| 12789 | 2013-10-05 | Seattle United S Blue B01 | 5 | Crossfire Select Nakamura B01 | 0 | NPSL B12D1 | 3.19 | 0.77 |
| 11845 | 2013-09-28 | BYSC Select Venom B01 | 1 | Seattle United S Blue B01 | 2 | NPSL B12D1 | 0.69 | 2.16 |
| 10896 | 2013-09-21 | Seattle United S Blue B01 | 1 | FC Edmonds Riptide B01 | 1 | NPSL B12D1 | 0.87 | 1.15 |
| 9923 | 2013-09-14 | Seattle United S Blue B01 | 4 | Seattle United W Blue B01 | 0 | NPSL B12D1 | 1.66 | 0.93 |
| 8978 | 2013-09-07 | TUSK United B01 | 3 | Seattle United S Blue B01 | 3 | NPSL B12D1 | 1.20 | 1.78 |
| 8672 | 2013-09-01 | Seattle United S Blue B01 | 5 | Lake Hills Legends B01 | 0 | Labor Day Cup BU12 | 5.90 | 0.43 |
| 8535 | 2013-08-31 | ISC Gunners B B01 | 0 | Seattle United S Blue B01 | 3 | Labor Day Cup BU12 | 0.64 | 3.00 |
| 8537 | 2013-08-31 | NWN Red B01 | 4 | Seattle United S Blue B01 | 1 | Labor Day Cup BU12 | 1.73 | 1.08 |
| 4968 | 2013-07-28 | Seattle United S Blue B01 | 4 | MVP Rapids Navy B01 | 0 | Crossfire Select Cup BU12 Gold | 2.52 | 0.88 |
| 4659 | 2013-07-27 | FC Edmonds Riptide B01 | 3 | Seattle United S Blue B01 | 0 | Crossfire Select Cup BU12 Gold | 1.15 | 0.87 |
| 4665 | 2013-07-27 | Sparta Red B01 | 0 | Seattle United S Blue B01 | 1 | Crossfire Select Cup BU12 Gold | 0.69 | 2.39 |
| 4509 | 2013-07-26 | Seattle United S Blue B01 | 3 | Crossfire Select Taylor B01 | 0 | Crossfire Select Cup BU12 Gold | 2.33 | 0.73 |